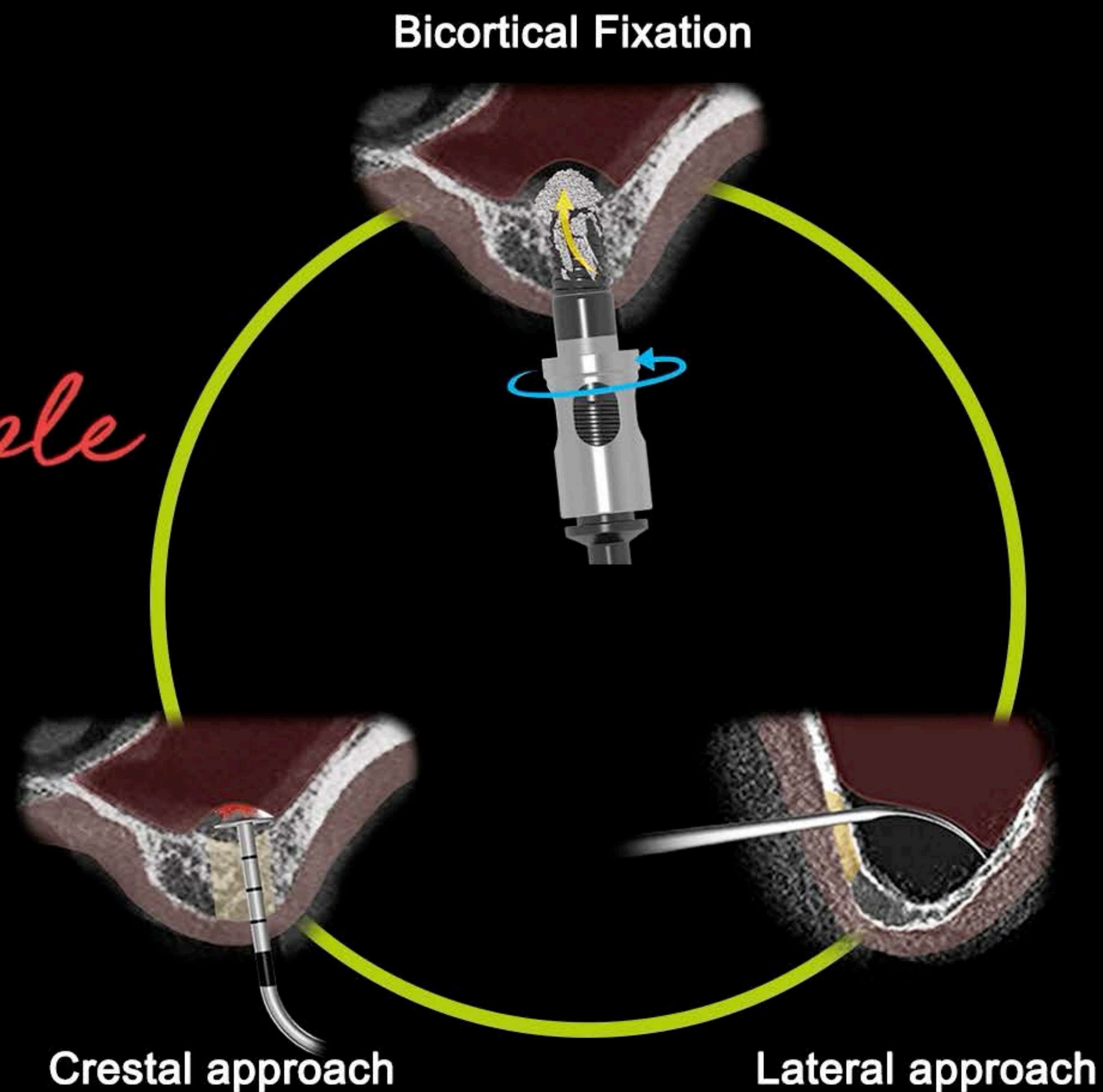


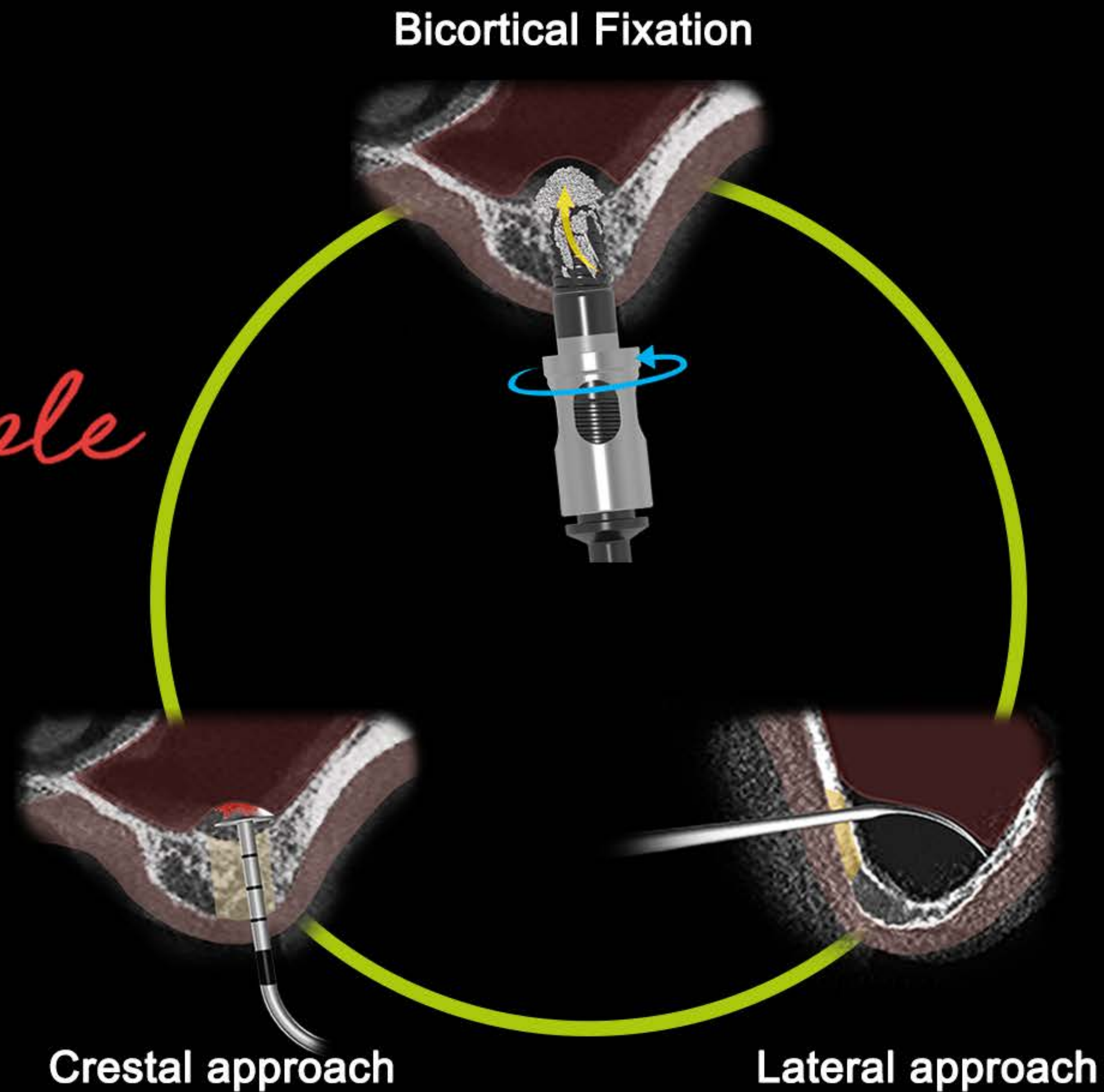
DASK *Simple*

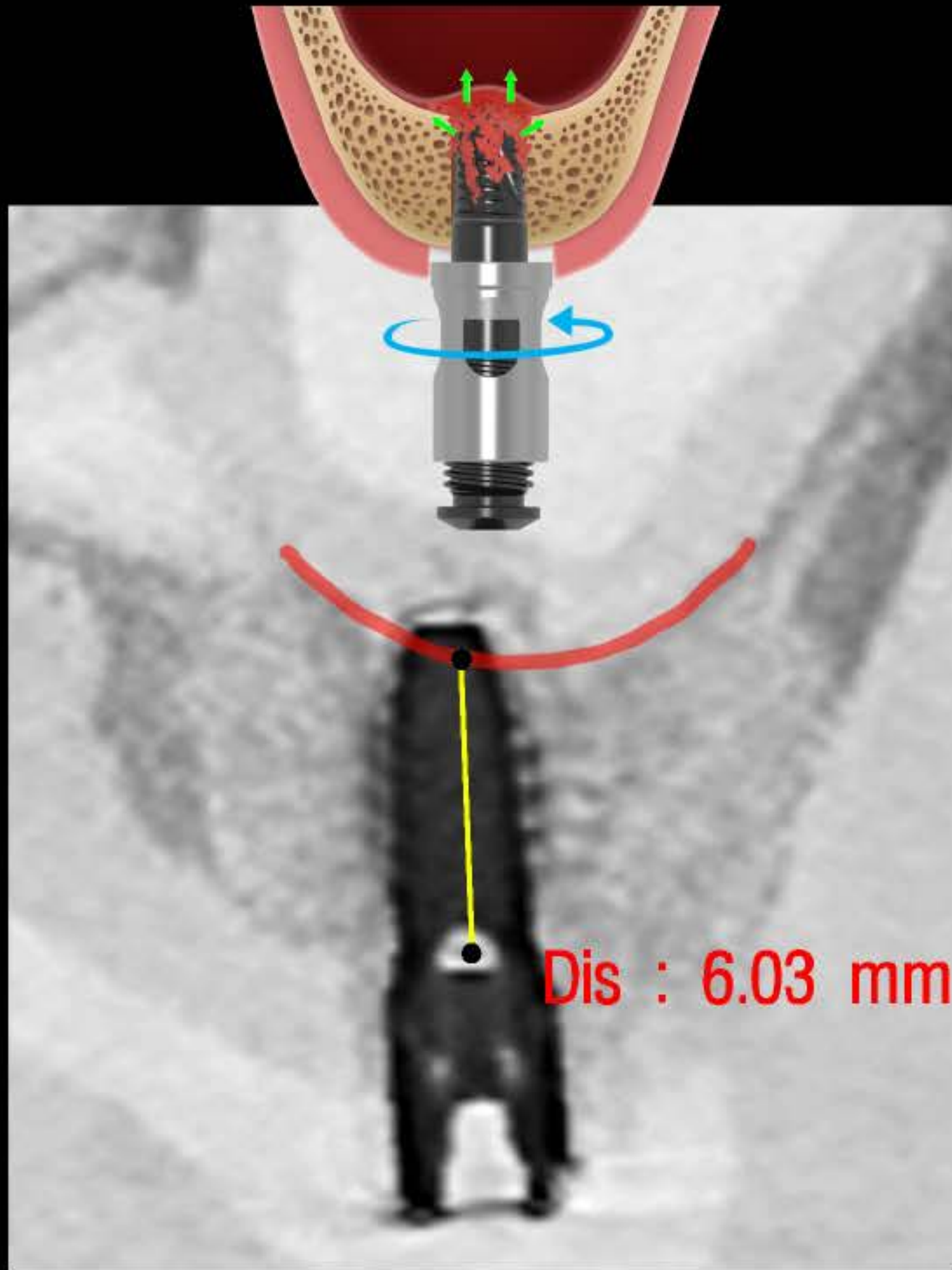
Hands-on guide



DASK *Simple*

Hands-on guide

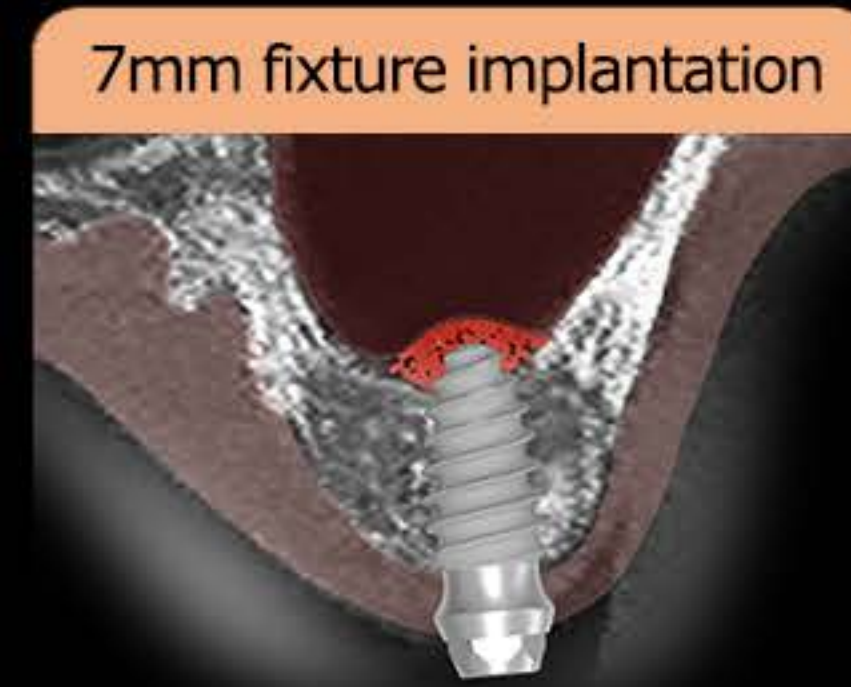
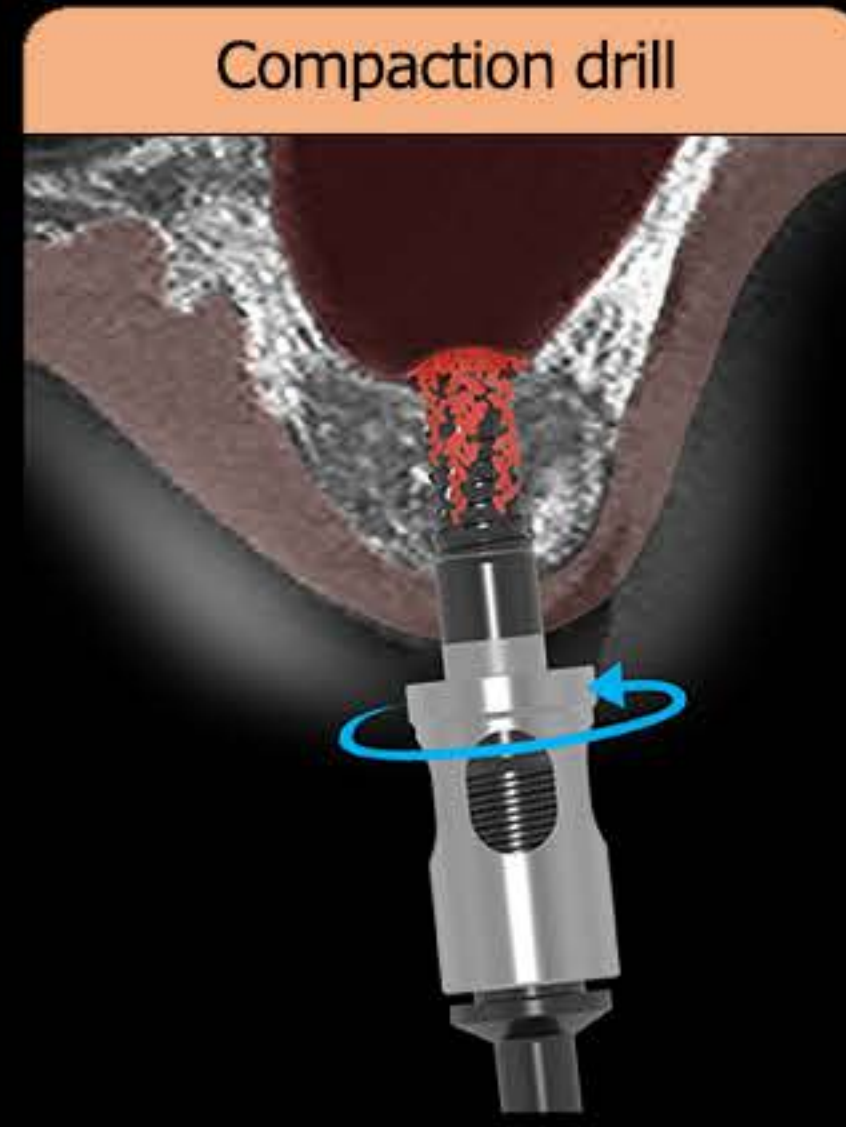
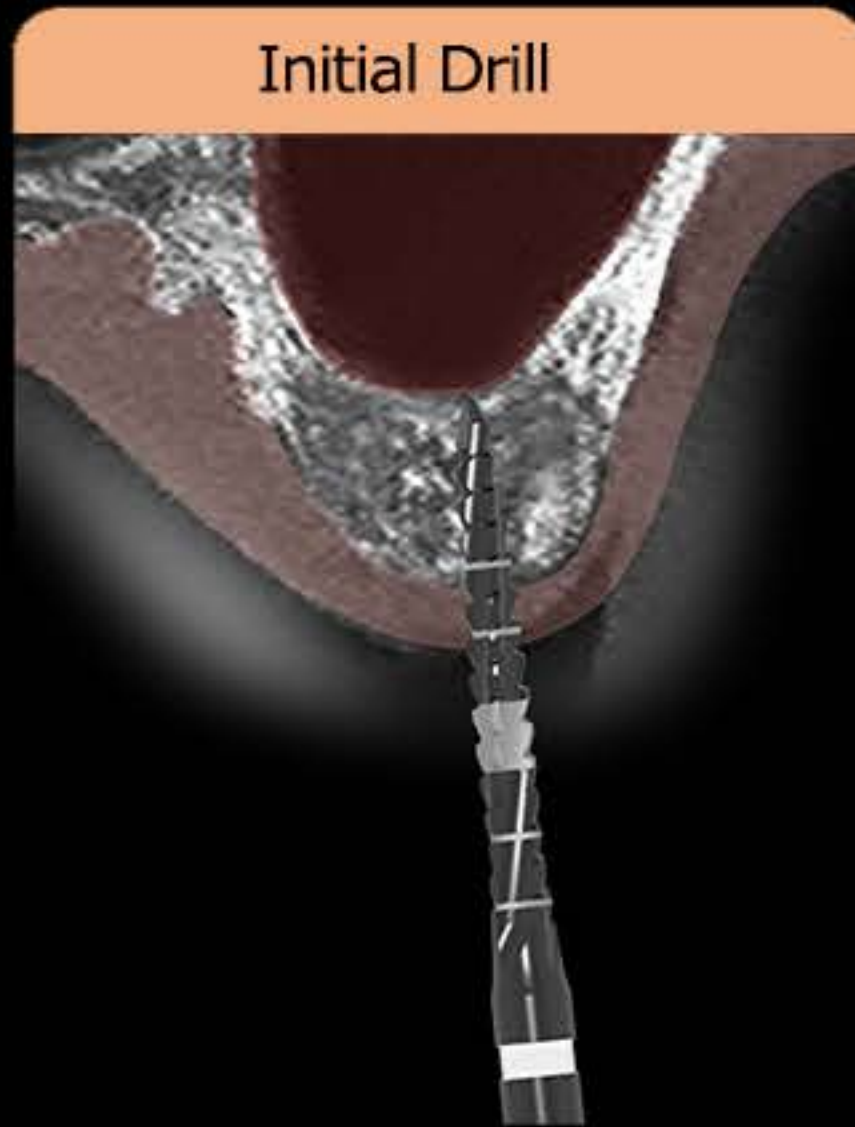




Hands-on guide
DASK *Simple*

Bicortical fixation

Bicortical fixation



#25 Bicortical Fixation



Early loading protocol

One size under drilling

Bone spreader

Longer and wider implant

Drilling protocol depend on bone quality

Soft bone - one size **under** drilling

Normal bone - normal drilling

Hard bone - one size **over** drilling

3

Tissue Level

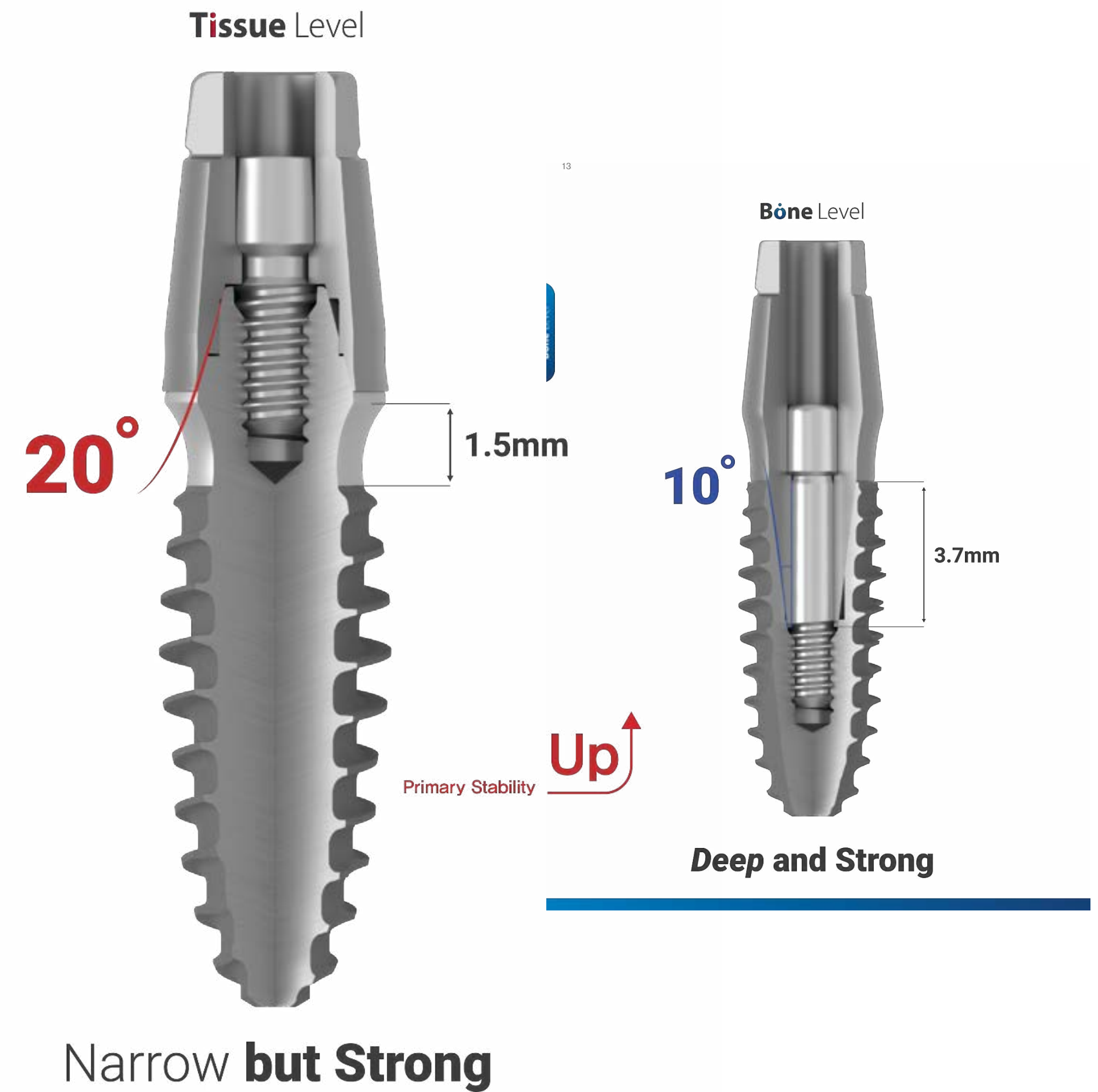


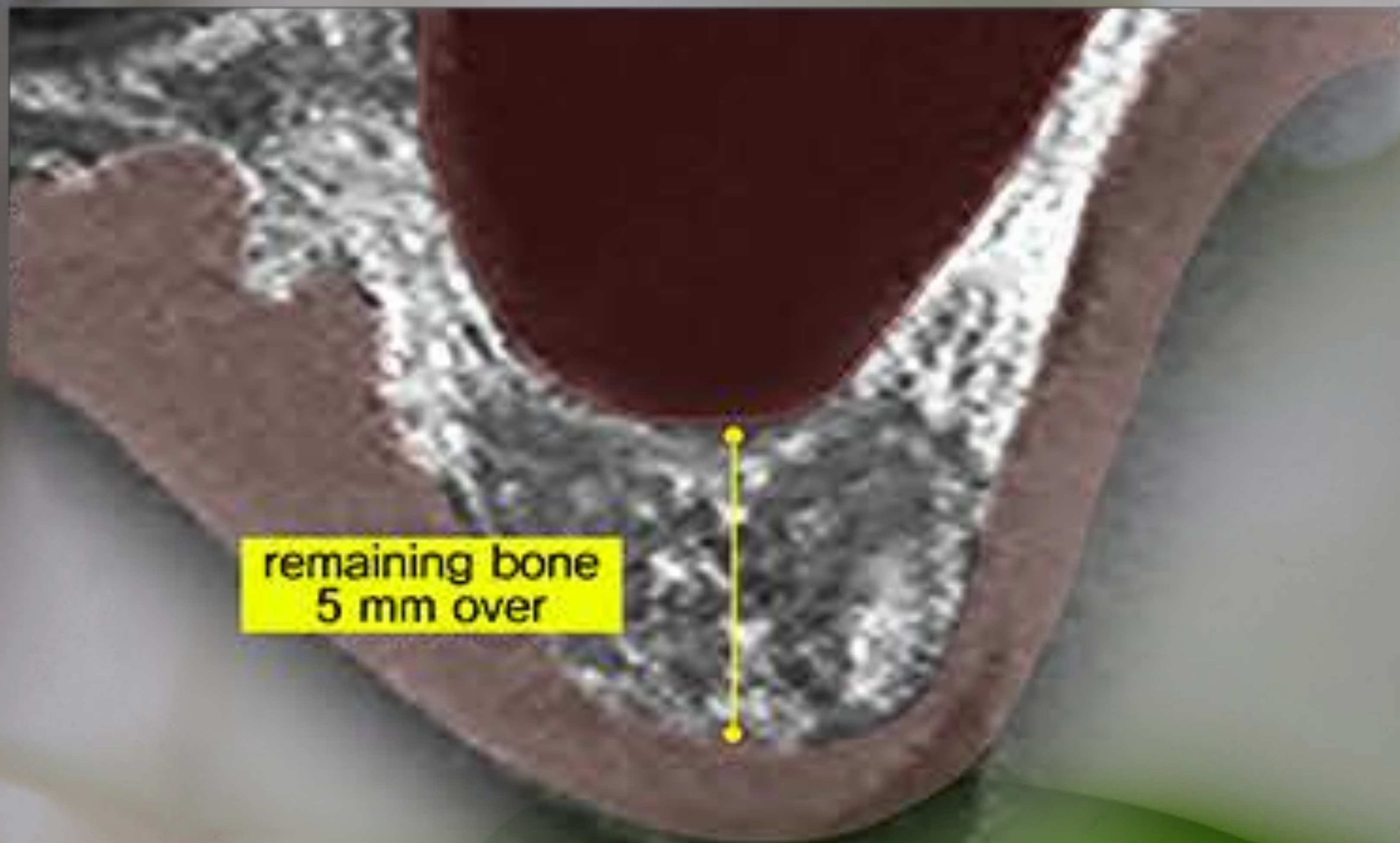
bright
Implant



Bone Level Tissue Level

Dentium

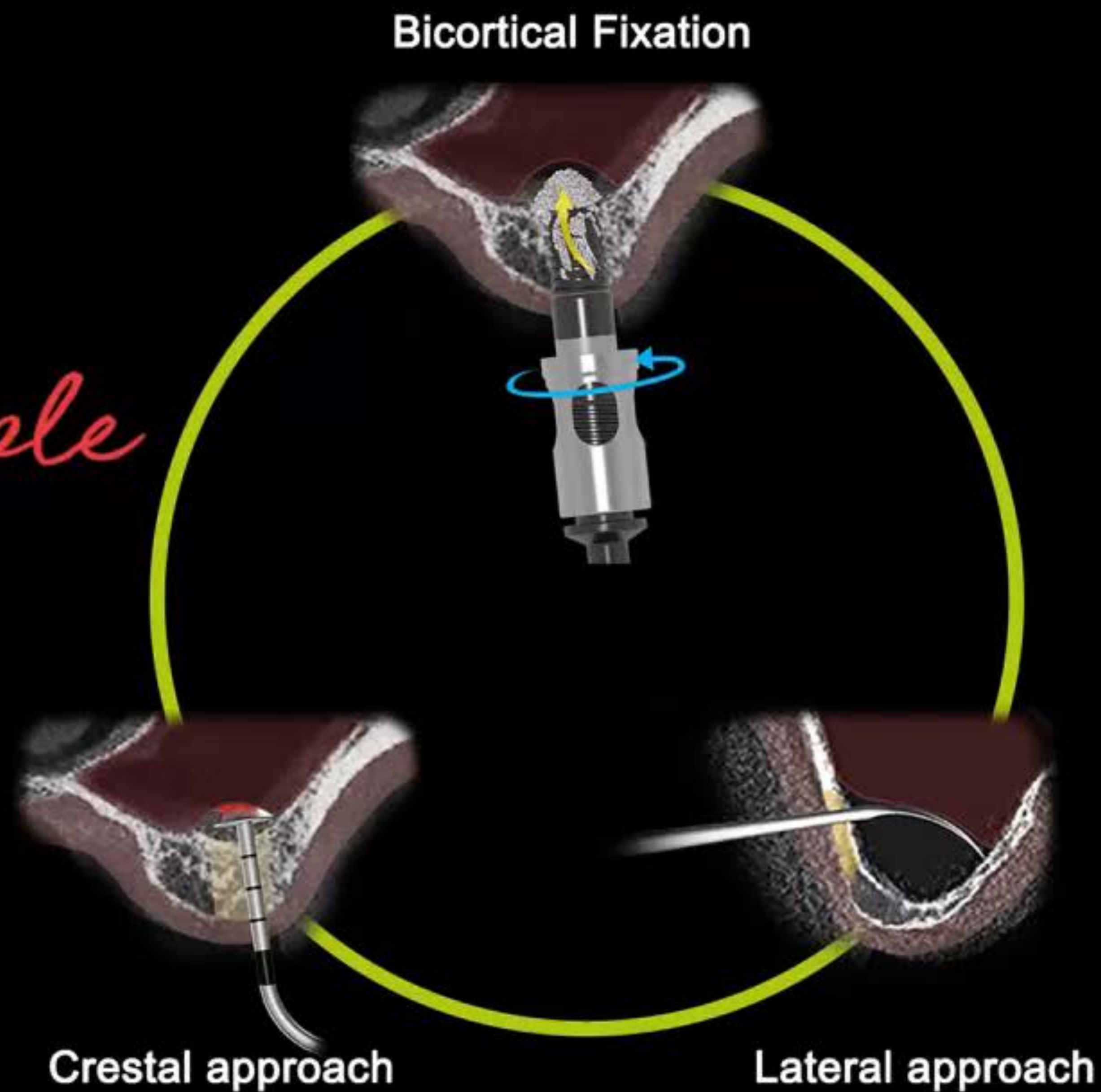


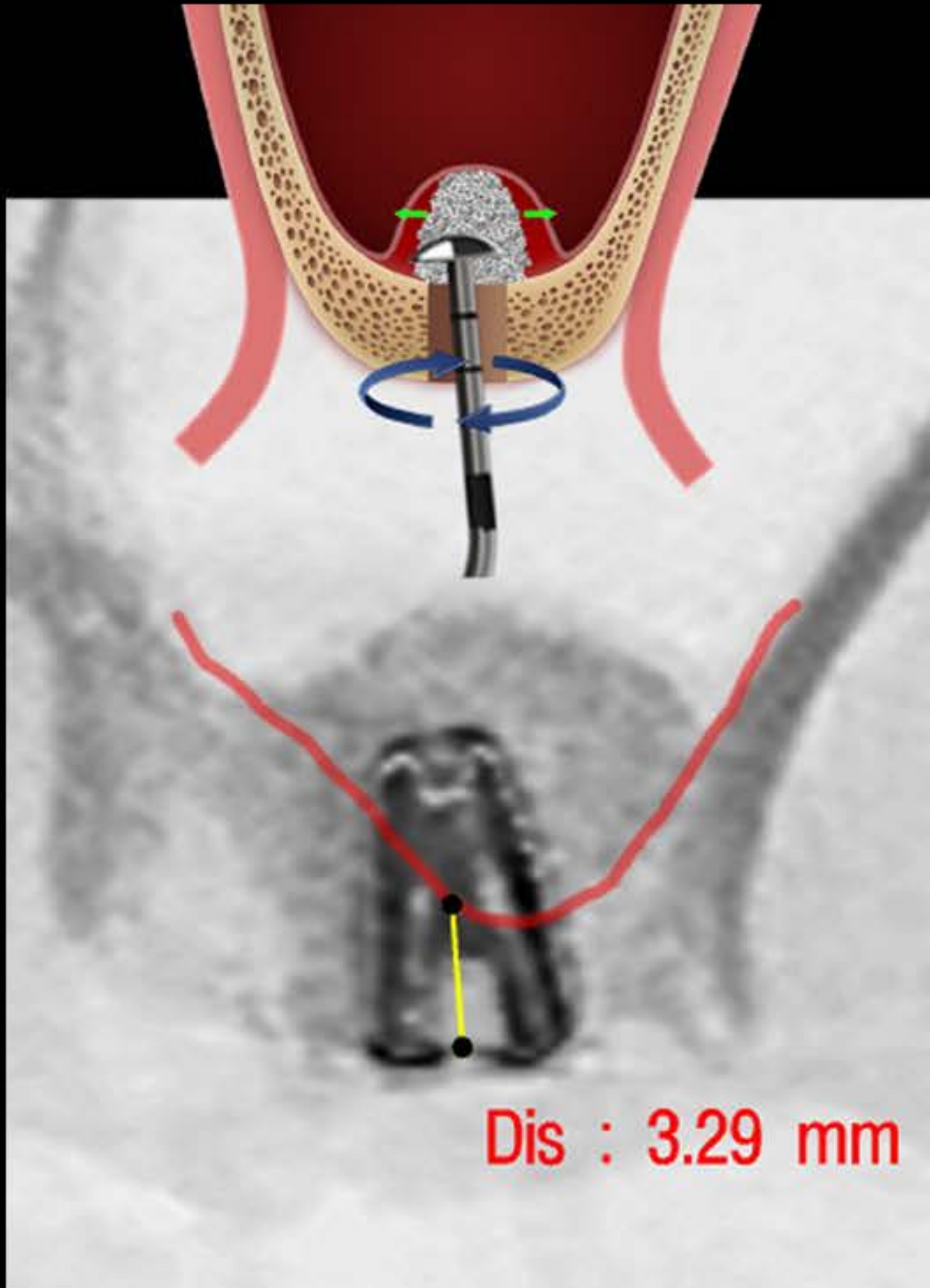


remaining bone
5 mm over

DASK *Simple*

Hands-on guide



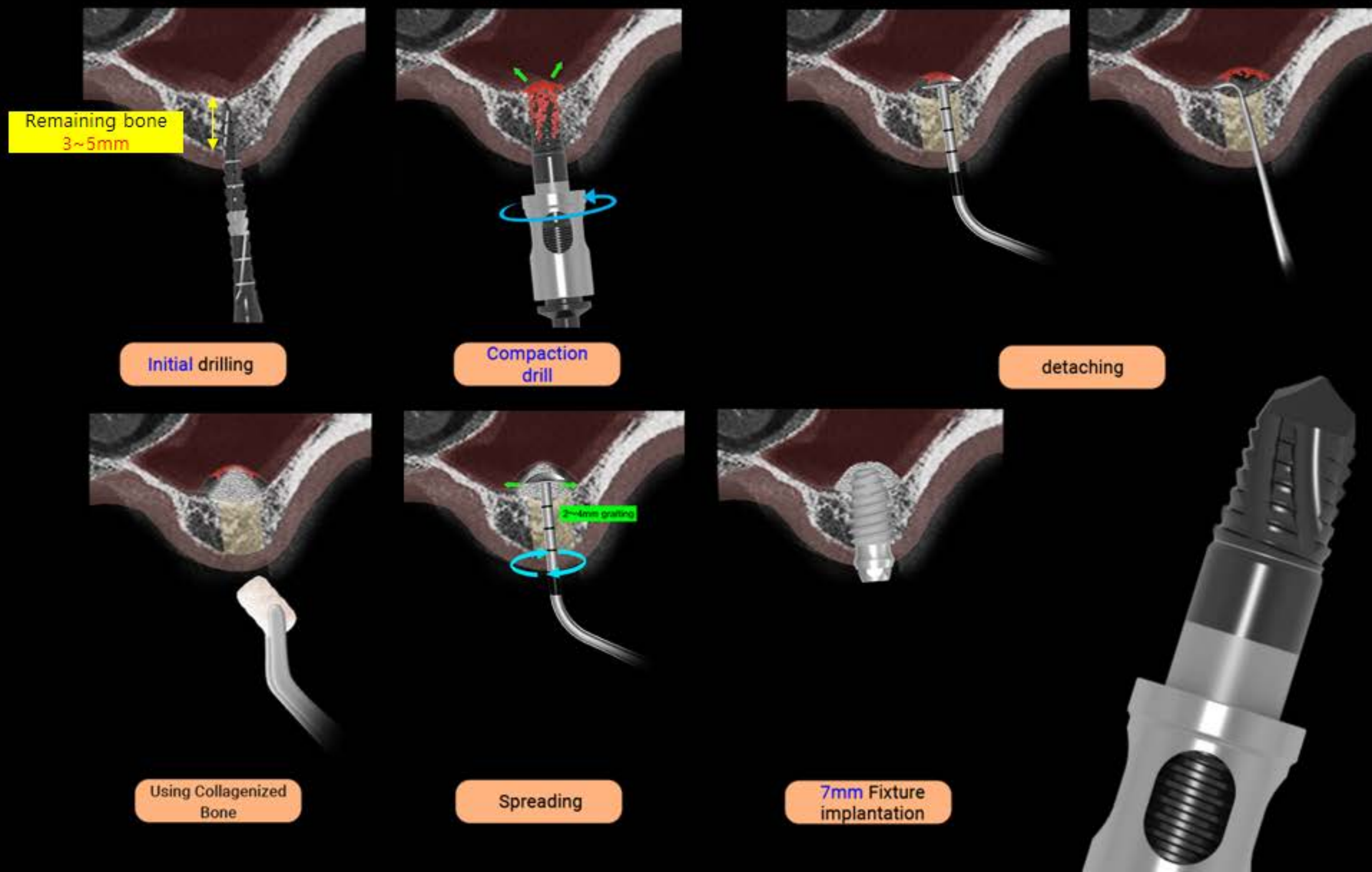


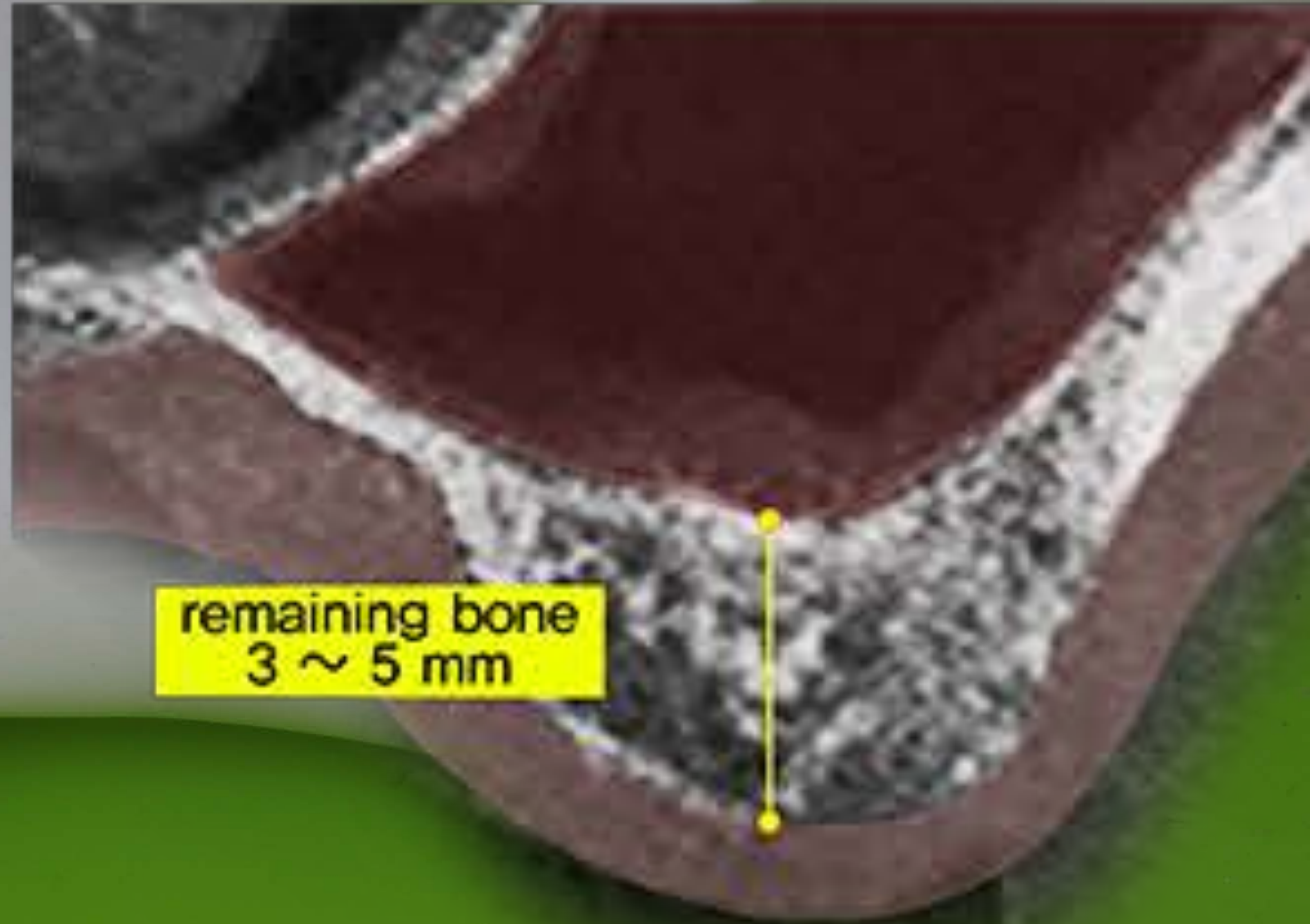
Hands-on guide

DASK *Simple*

Crestal approach

Crestal approach





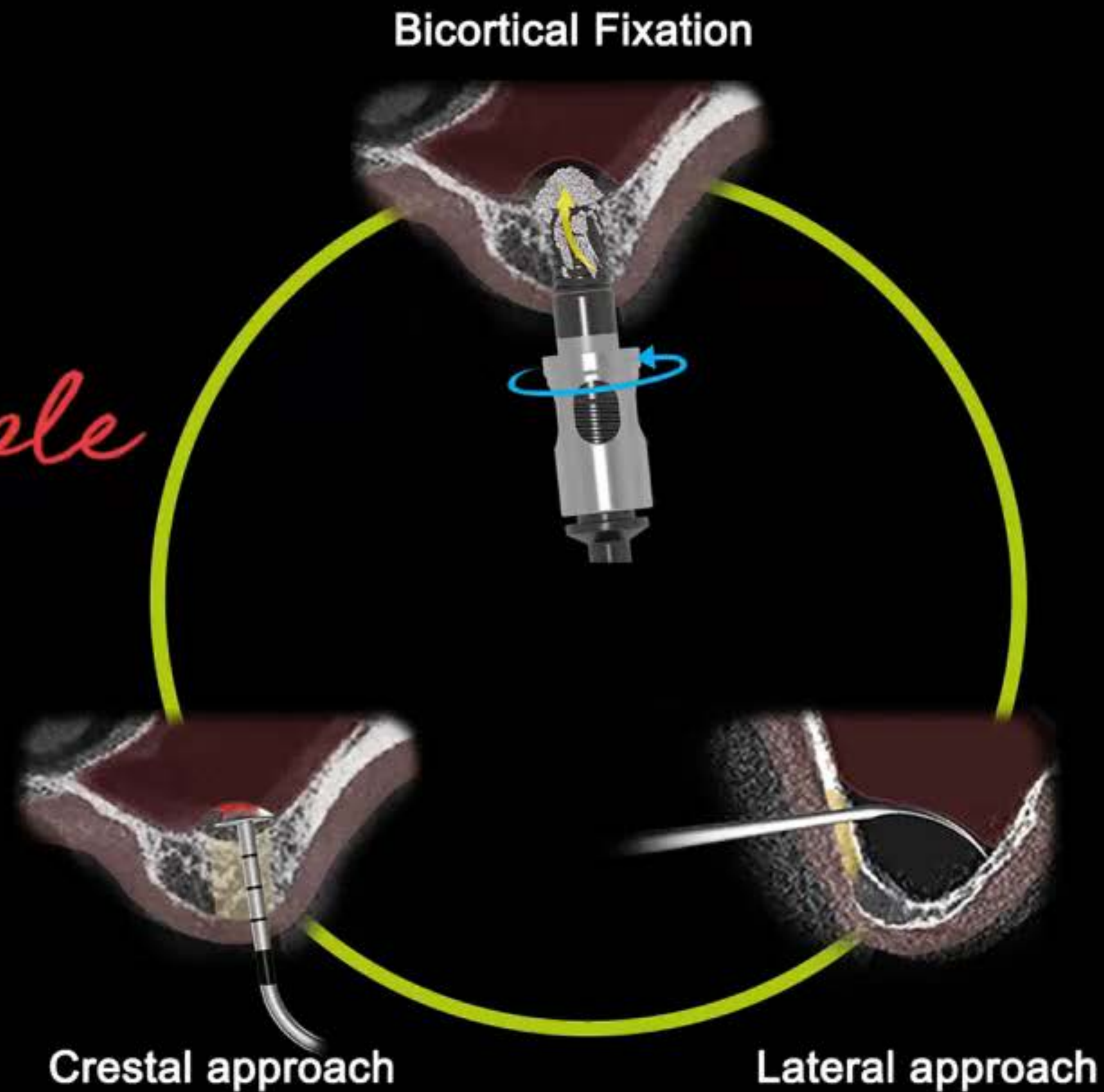
remaining bone
3 ~ 5 mm

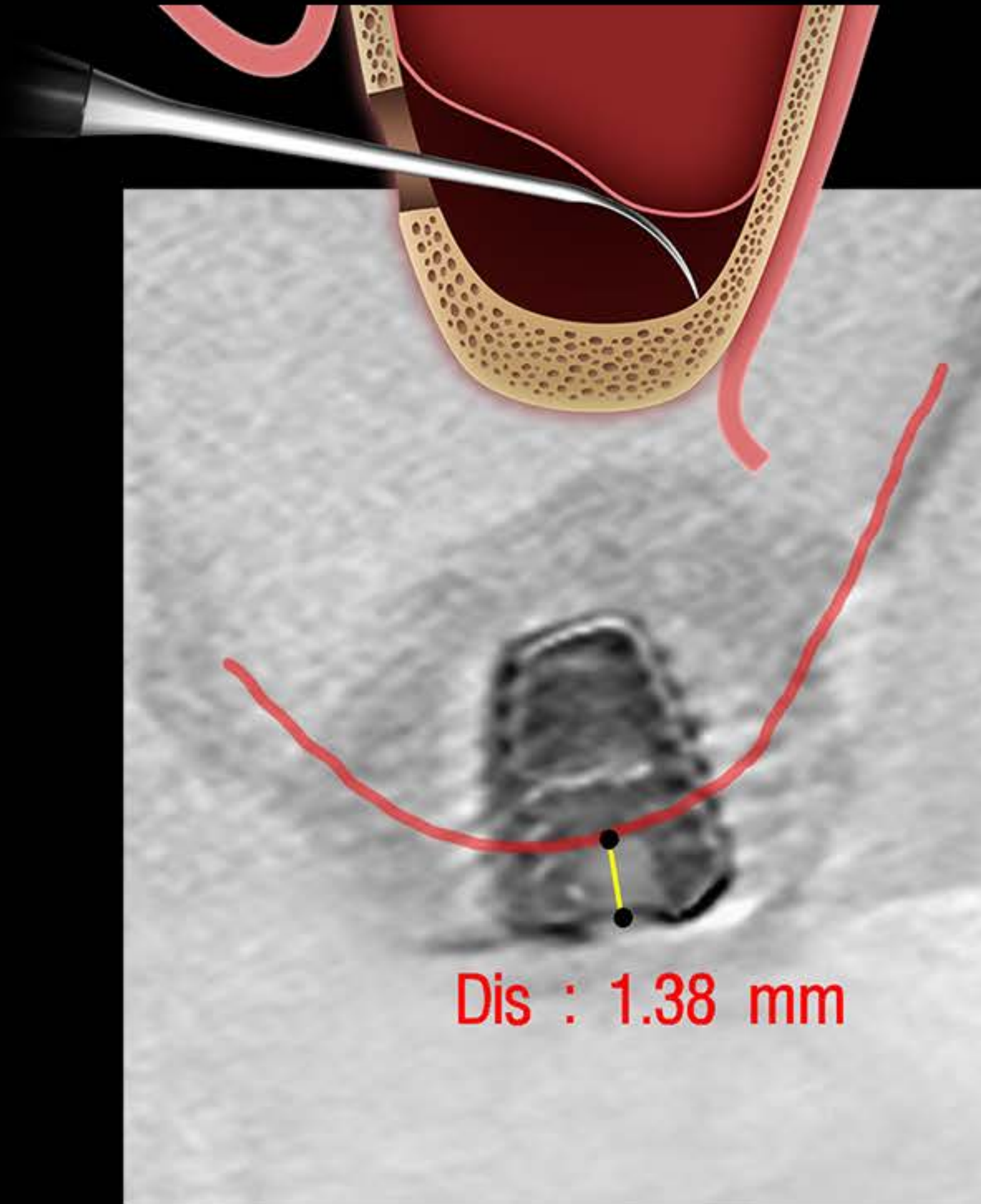
#27 Crestal approach



DASK *Simple*

Hands-on guide





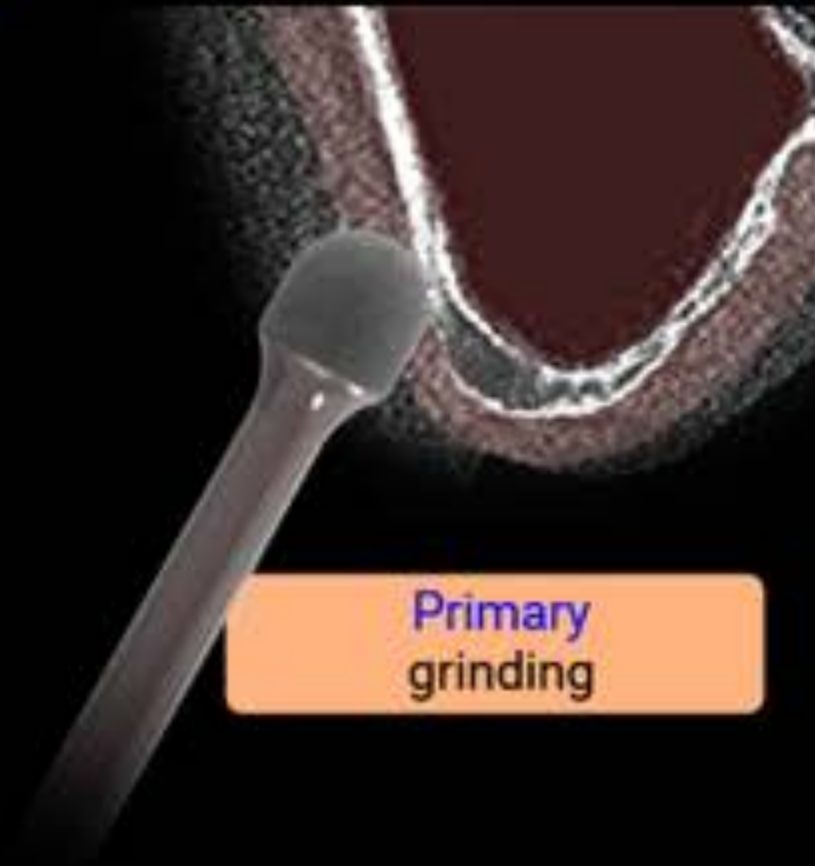
Hands-on guide

DASK *Simple*

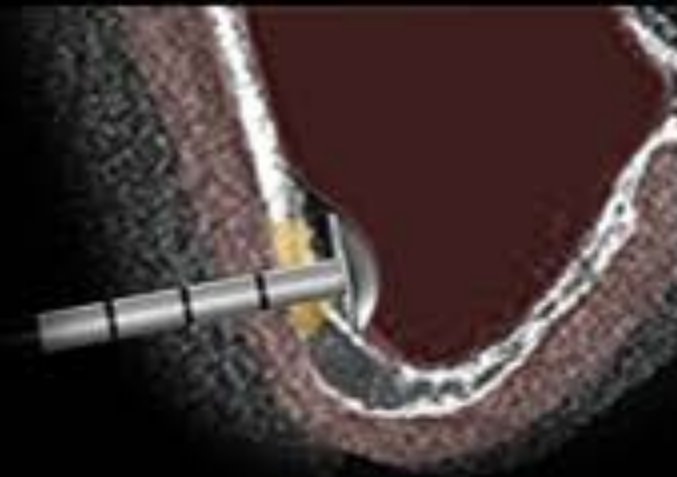
Lateral approach

Lateral approach

1
step

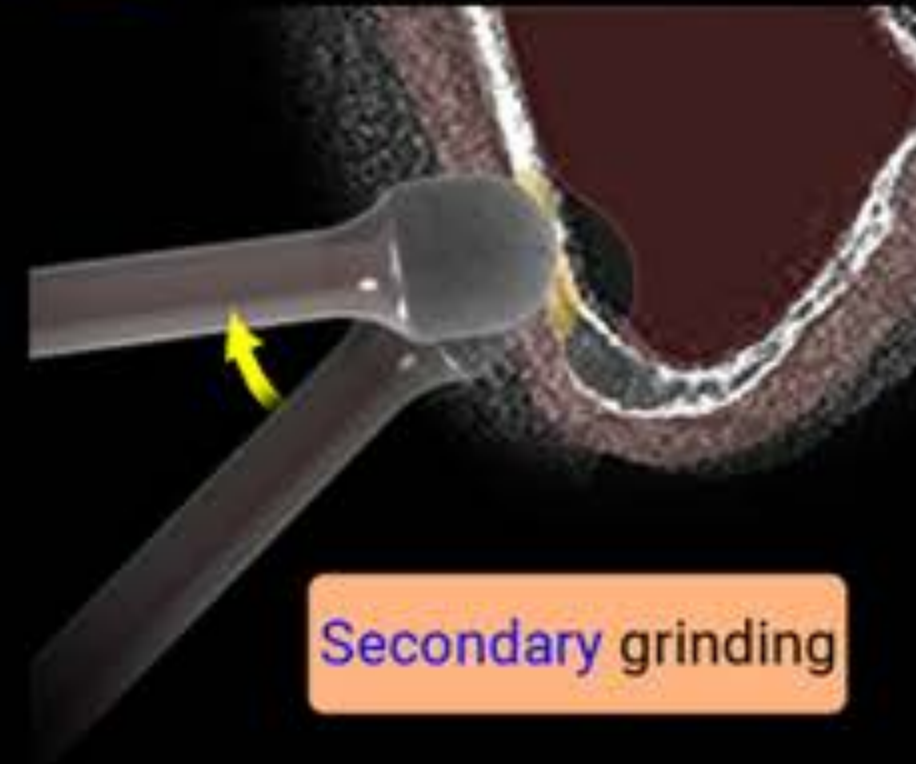


Primary grinding

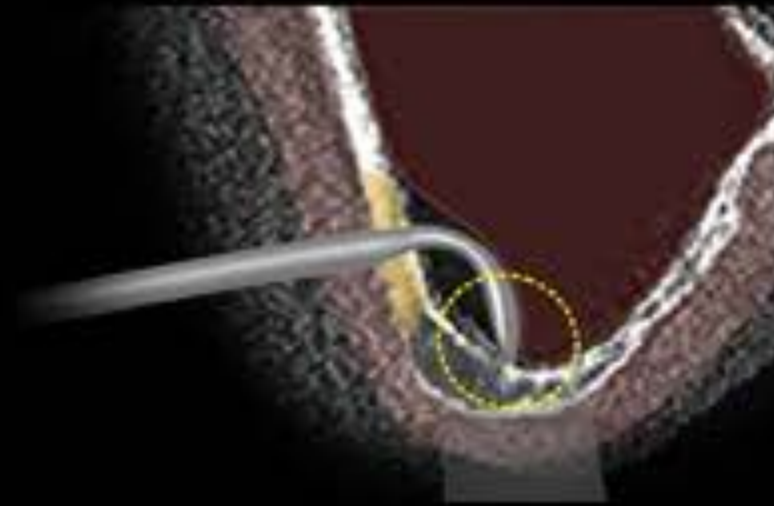


Initial detaching

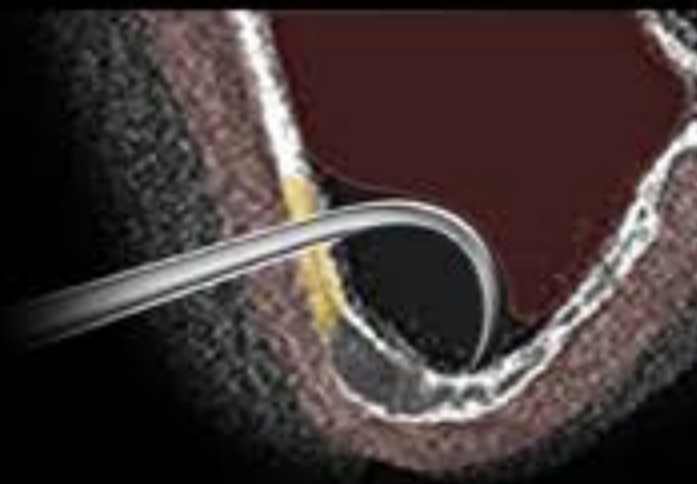
2
step



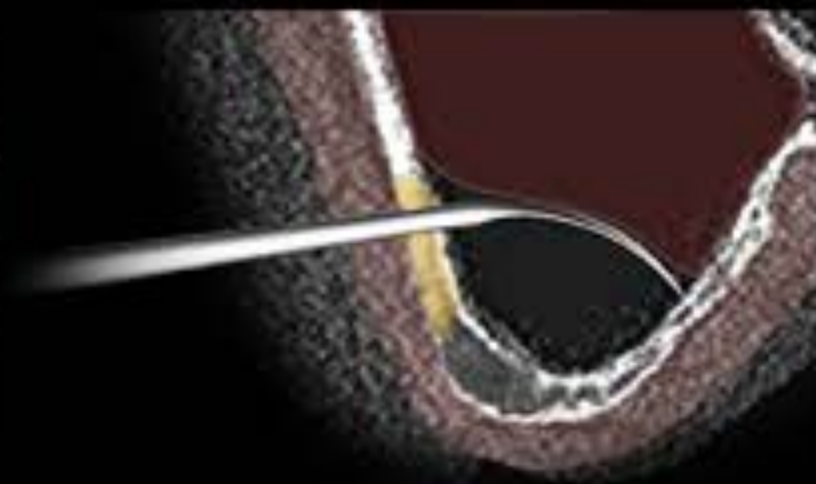
Secondary grinding



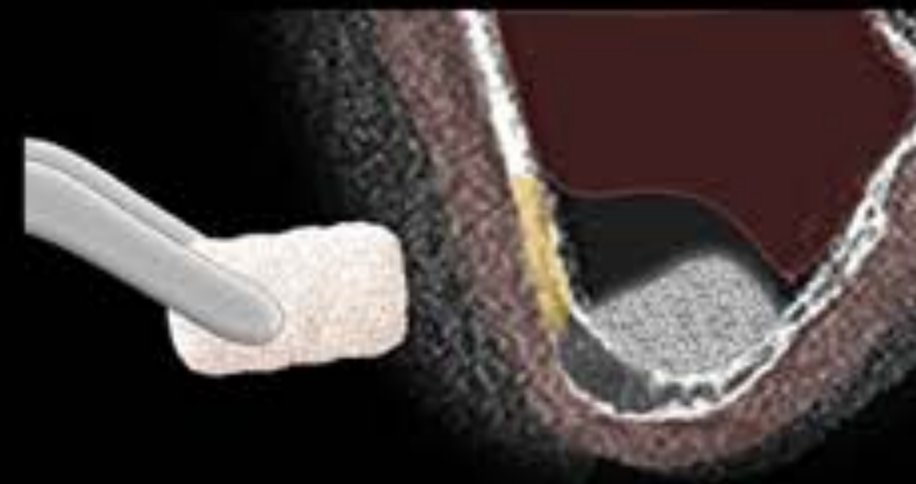
detaching



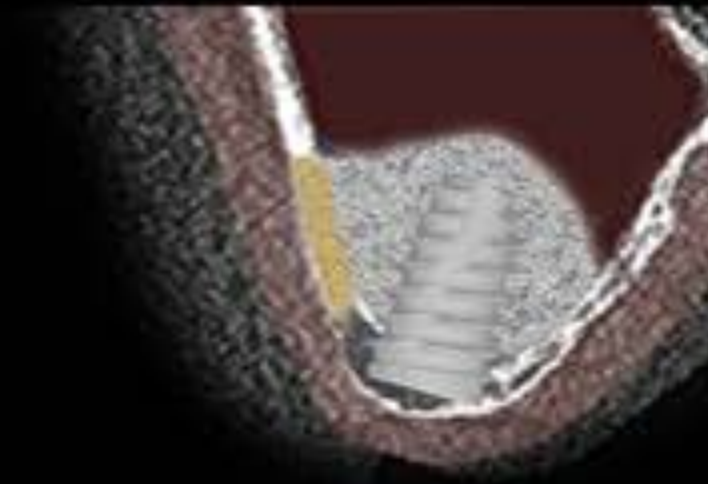
detaching



detaching

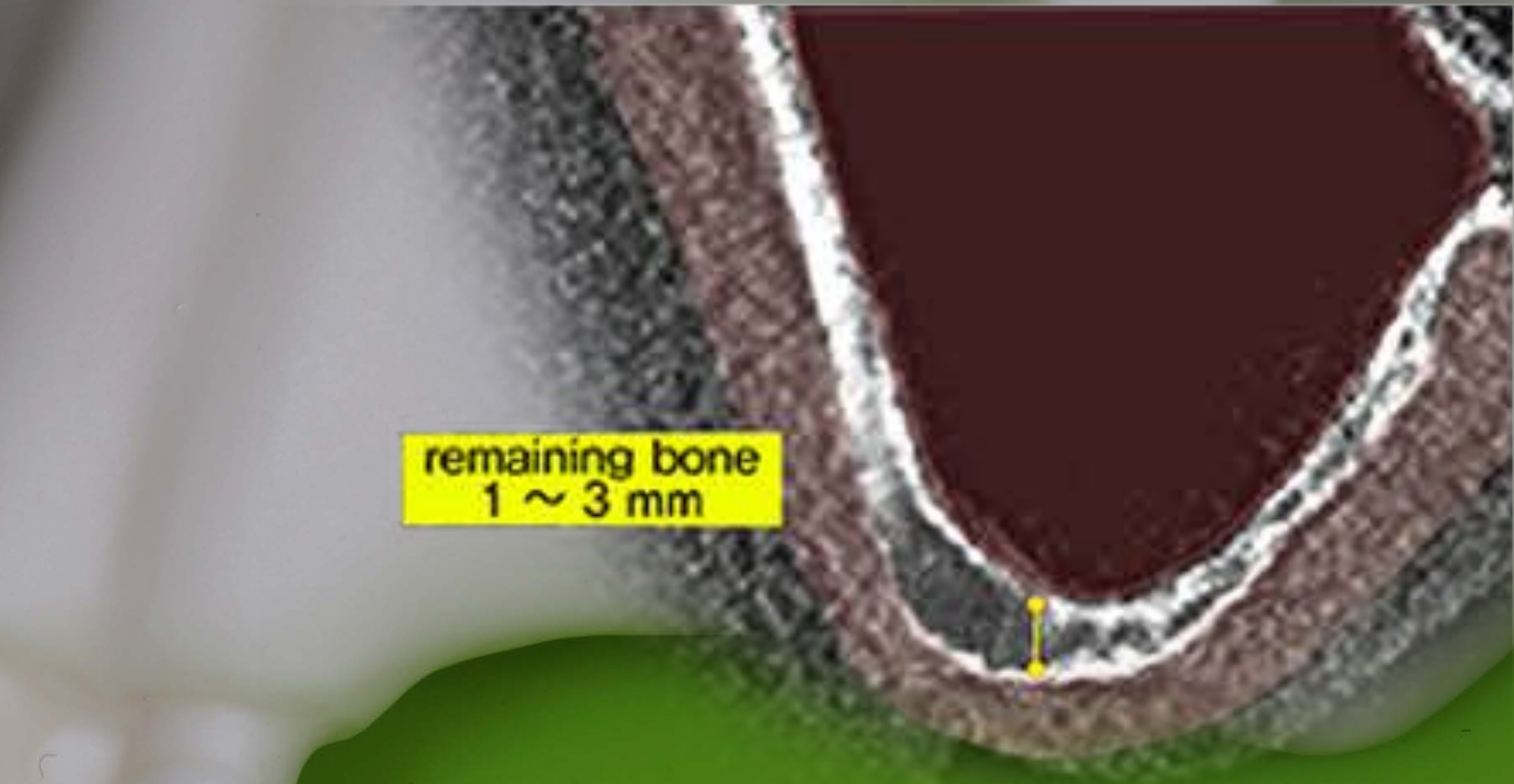


Using Collagenized Bone



7mm Fixture implantation

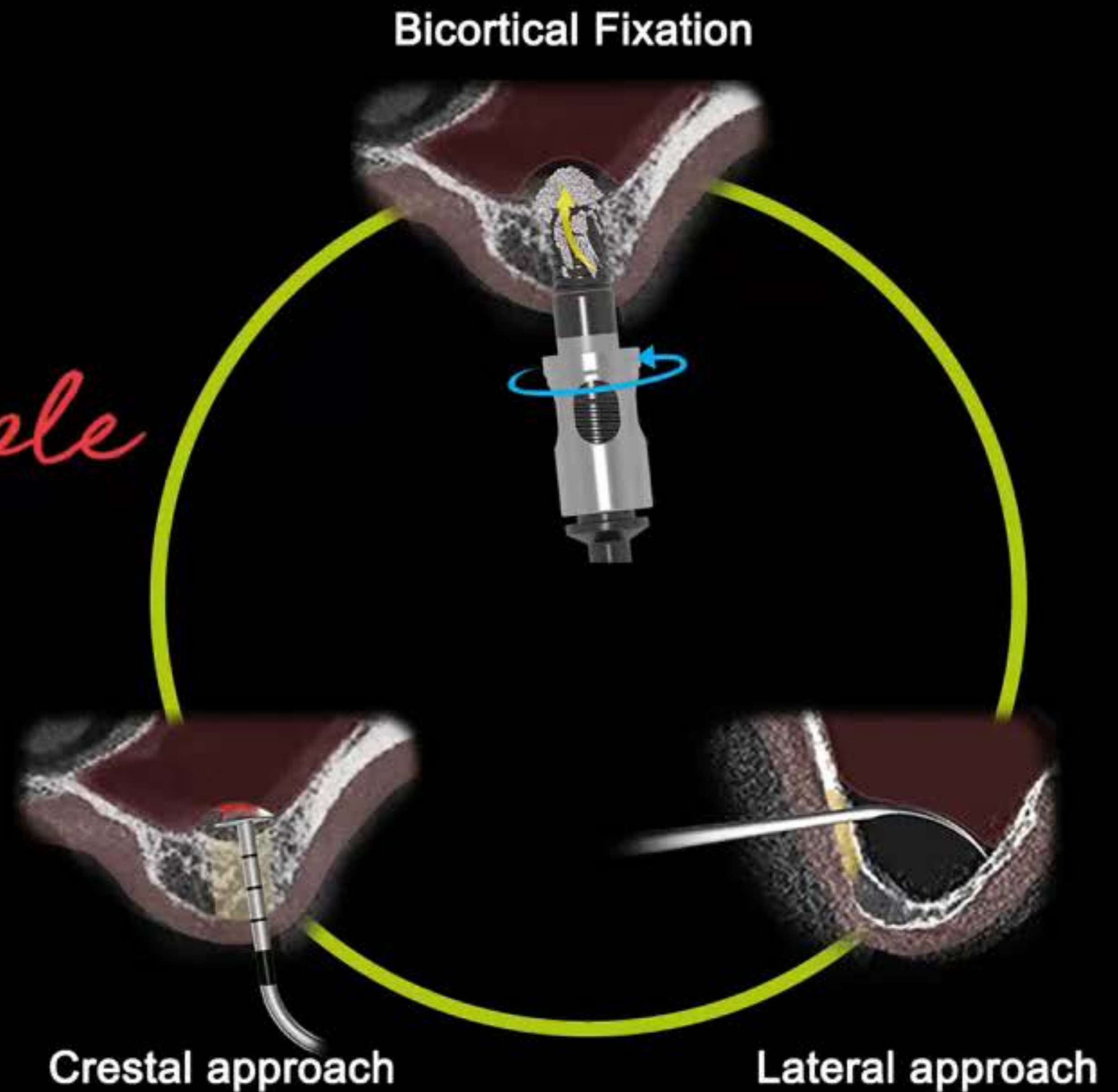
2 step grinding-out technique



remaining bone
1 ~ 3 mm

DASK *Simple*

Hands-on guide





Digital Abutment

Available for Healing, Impression, Scan, **Permanent Abutment**



Scan Comfort Cap

Available for Healing, Impression, Scan